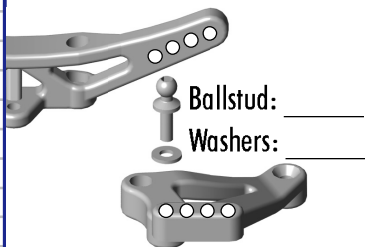


TCA! Setup Sheet

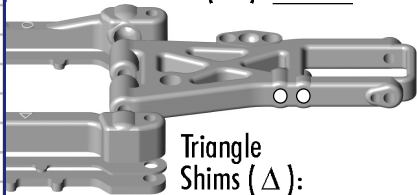
Driver: _____ Date: _____
 Track: _____ Indoor Outdoor
 Event: _____
 Conditions: _____

Front Suspension



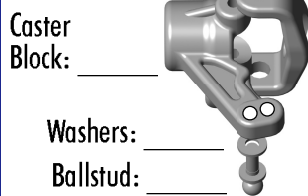
Ballstud: _____
 Washers: _____

Circle Shims (O): _____



Triangle Shims (Δ): _____

Front Upright



Caster Block: _____
 Washers: _____
 Ballstud: _____

Arm Spacing

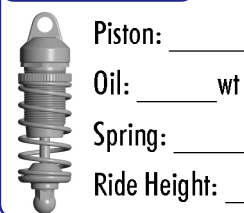


Anti-Roll Bar

- .055 - Black
- .063 - Silver
- .078 - Gold
- Other: _____

Notes: _____

Front Shocks

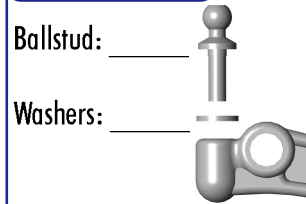


Piston: _____
 Oil: _____ wt
 Spring: _____
 Ride Height: _____ mm

Alignment

Droop: _____
 Camber: _____
 Toe: _____

Steering Rack



Ballstud: _____
 Washers: _____

Front Diff

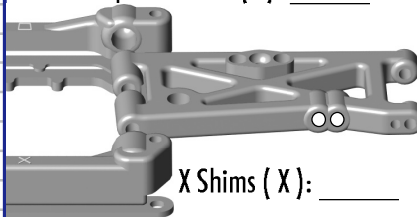
- Diff Setting: _____
- Solid Axle
- Oneway

Rear Suspension



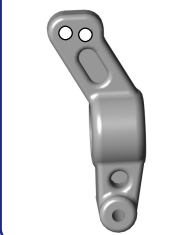
Ballstud: _____
 Washers: _____

Square Shims (□): _____



X Shims (X): _____

Rear Upright



Arm Spacing

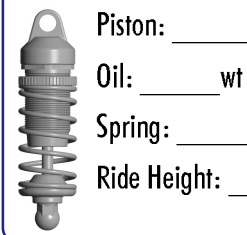


Anti-Roll Bar

- .055 - Black
- .063 - Silver
- .078 - Gold
- Other: _____

Notes: _____

Rear Shocks



Piston: _____
 Oil: _____ wt
 Spring: _____
 Ride Height: _____ mm

Alignment

Droop: _____
 Camber: _____
 Toe: _____

Body & Wing

Body: _____
 Wing: _____
 Sidedams
 Spillplates
 Notes: _____

Tires

Front Tires

Compound: _____
 Insert: _____
 Wheel: _____
 Traction Compound: _____
 Notes: _____

Rear Tires

Compound: _____
 Insert: _____
 Wheel: _____

Electronics

Motor: _____ Gear: _____ t/ _____ t
 Motor Brush: _____ Motor Spring: _____
 Motor Timing: _____
 Battery: _____ Position: _____
 ESC: _____ Mode: _____
 Drag Brake: _____ Initial Brake: _____

Race Comments

Main: _____ Qualifying Position: _____ Finish: _____
 Notes: _____

Car Comments

Notes: _____

